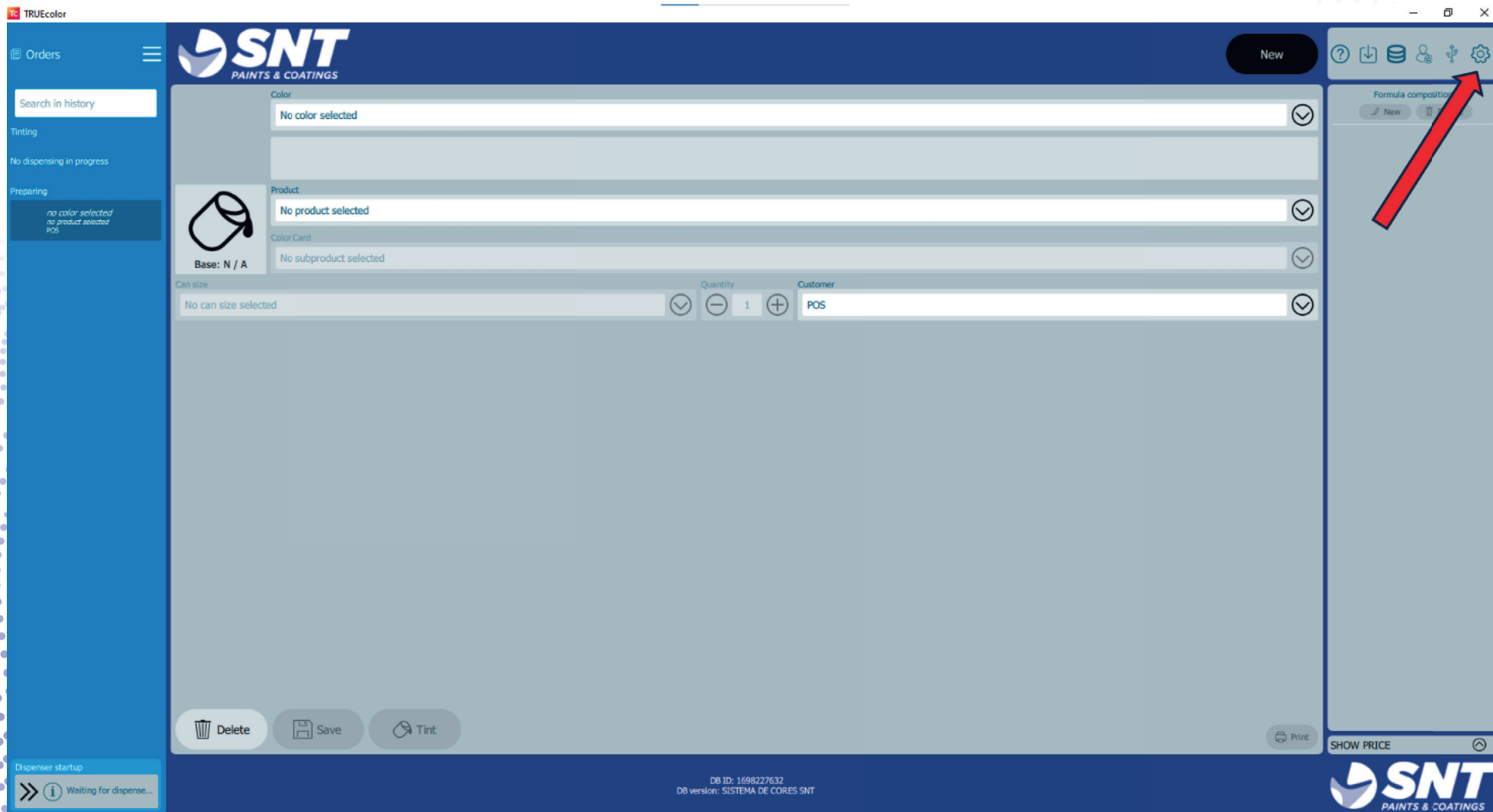


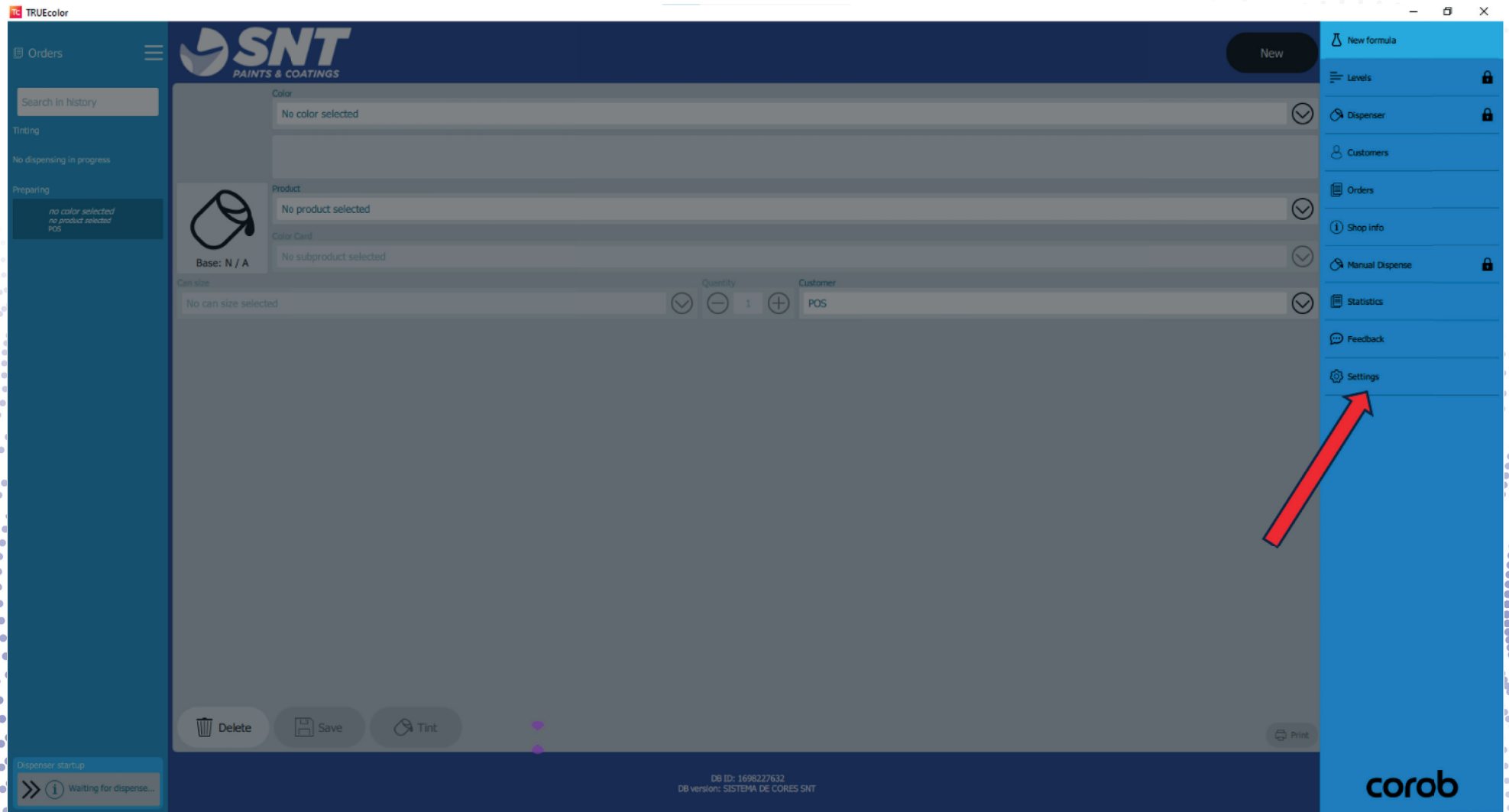
# 1° Select "Settings".

The following procedure aims to introduce the new database into the TrueColor software, including the previously defined list of priority colors.

Two databases will be available: the new one, named SNT COLOR SYSTEM NEW VERSION, and the previous one, SNT COLOR SYSTEM. It will also be possible to access the custom formulas saved in the previous database.



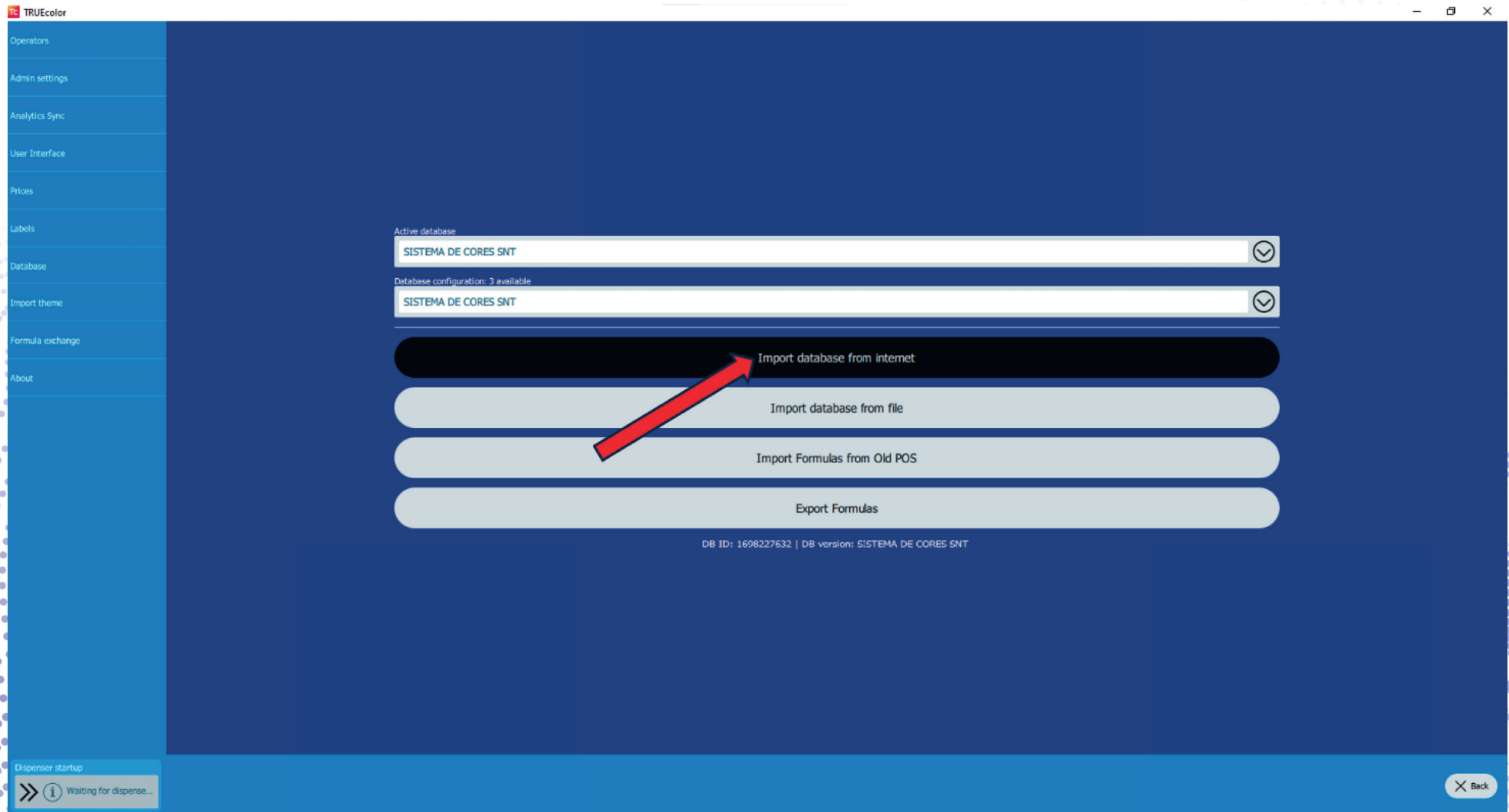
## 2° Select "Settings".



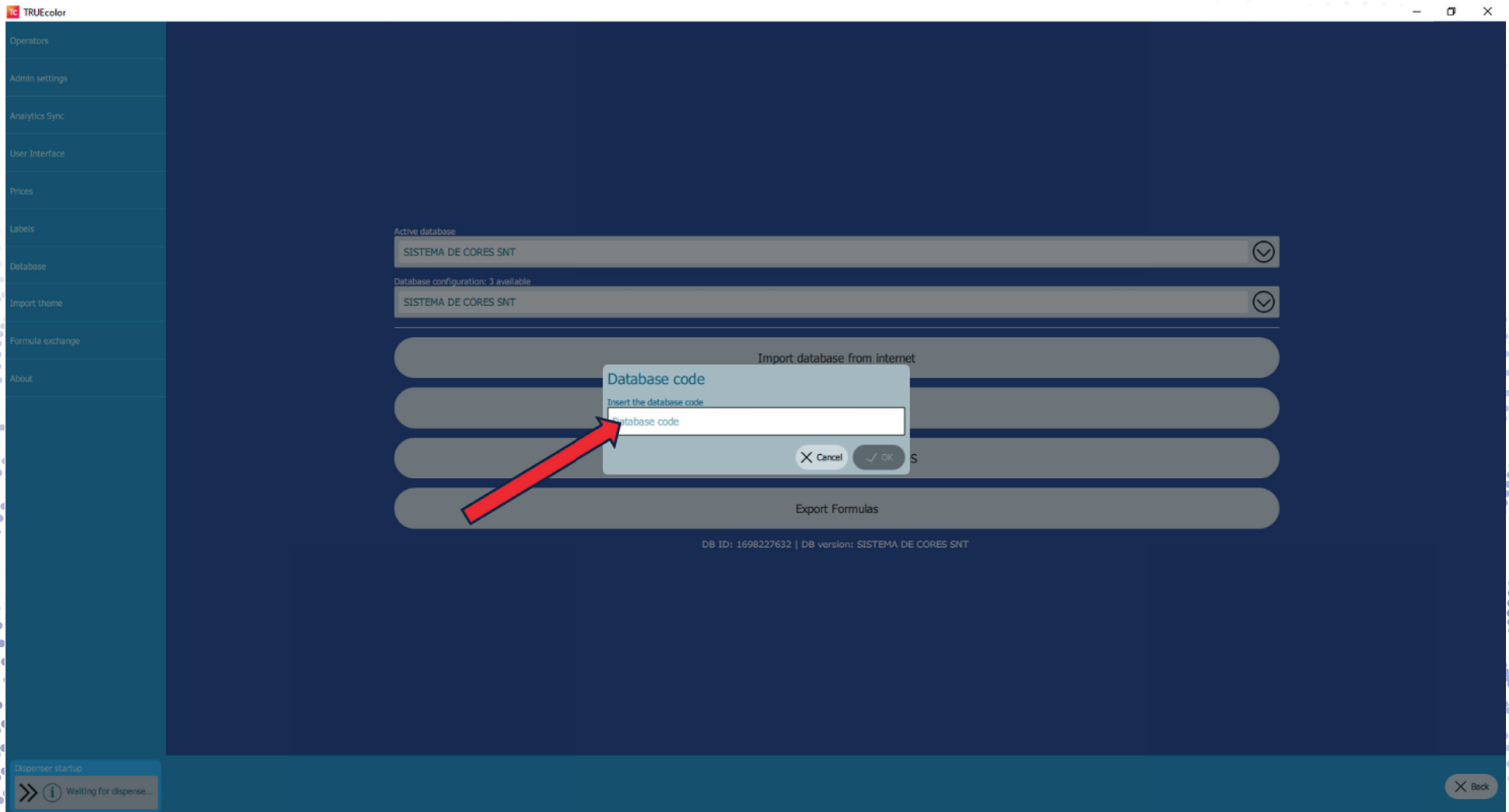
### 3° Select “Database”



## 4° Select “Import database from internet”.

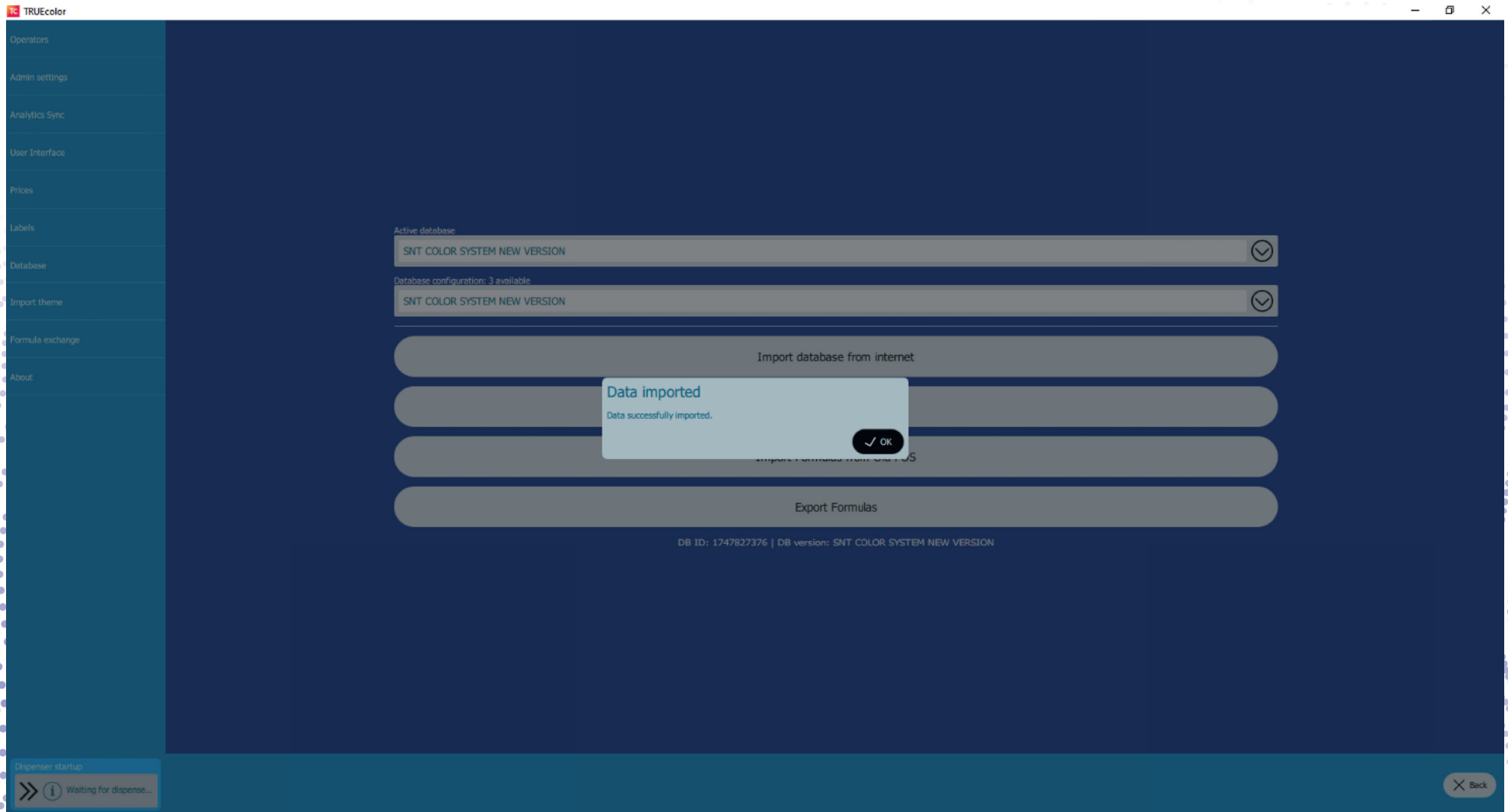


5° In the "Database code" window, enter the code provided.

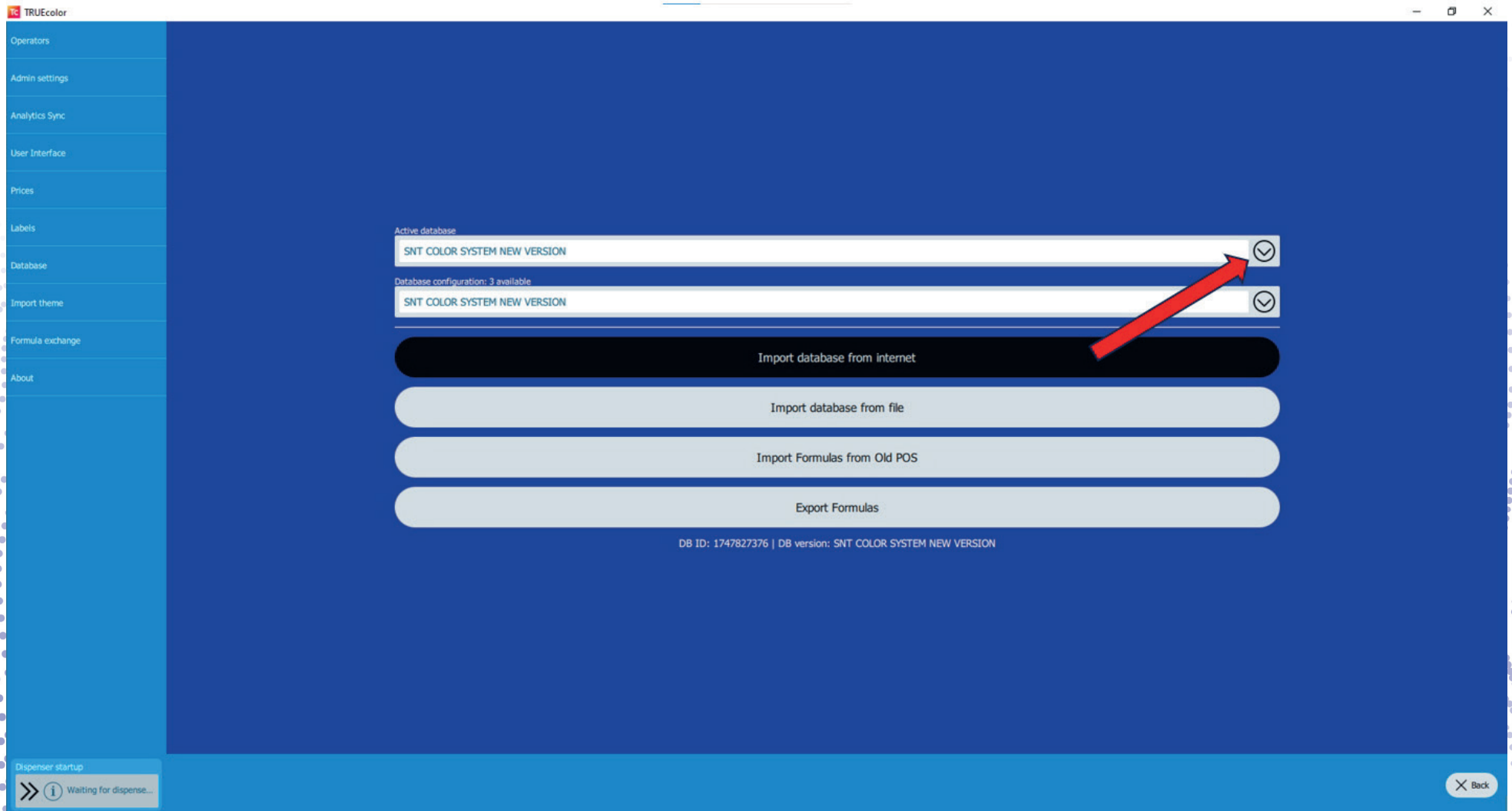




## 6° At the end, a window appears.



**7° From now on, you will have two databases available. You can switch between them by changing the active database. To do this, click as indicated by the arrow below.**



## 8° Seleccionar a base de datos pretendida.

From now on, both databases are available and you can switch between them whenever you like.

